



RJ MAST ARM ASSEMBLIES

OVERVIEW

The RJA bracket is a large pole plate for mounting single member arms. This sturdy construction can be banded or bolted into the traffic pole.

We offer this product as a package with 2 foot, 4 foot or 6 foot arms to attach into the larger pole plate entrance. Arm diameters are 2 3/8" aluminium and steel or steel.

FEATURES—RJ MAST ARM ASSEMBLIES

- Bolt on band
- Adjustable angle
- Minimizes stress
- Simplified installation
- Stainless steel hardware



CONTACT US:

CANADA: (905) 670-3444

US/TOLL FREE: 1-844-668-6848



RJ MAST ARM ASSEMBLIES

ORDERING INFORMATION

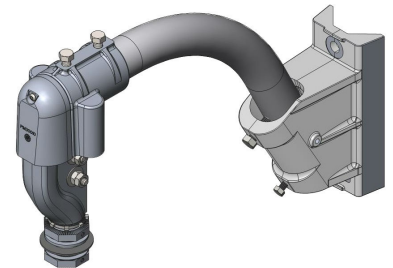
PART NUMBER	DESCRIPTION
R2JA	SMA Mast Arm Assembly, 2ft, c/w Large Pole Plate
R4JA	Mast Arm Assembly, 4ft, c/w Large Pole Plate
R6JA	Mast Arm Assembly, 6ft c/w Large Pole Plate
RXJA	Large Pole Plate only

SUPPORT & WARRANTY

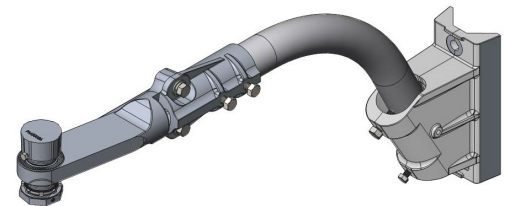
We believe so much in the quality of our products that we offer an industry leading support and warranty program, five years of warranty from date of initial purchase. If it breaks on installation we will replace it, no questions asked.

SPECIFICATIONS

- Finish:** Cast aluminum
Material: Primary grade aluminum alloy
Machine: Computer numeric controlled machinin(CNC) to within 0.001" of Specification



RJ with Cushion



RJ with Plumbizer

CANADIAN OFFICE/WAREHOUSE
 1641 Trinity Drive
 Mississauga, ON L5T 1K4
www.traffichardware.com

CENTRAL OFFICE
 300 International Drive, Suite 100
 Buffalo, NY 14221
www.traffichardware.com