



# SINGLE/DOUBLE/DOUBLE SLIM POLE PLATES

## OVERVIEW

Designed with round poles in mind, the single band pole plate is ideal for wood, metal or concrete poles. Similarly the double band pole plate was designed with octagonal poles in mind and has cast serrations that bite into the pole to prevent slippage. Both the single and double styles are available in threaded and non-threaded options with stainless and non-stainless hardware

The slim double band pole plates are designed with a slimmer mounting base ideal for mounting on smaller diameter poles or mounting in multiples. Standard "classic" is curved with cast serrations and options for threading preference, but it also comes in a 'O' ring style

All styles are attached to the pole by a stainless steel band or bolts and have integrated drip holes to allow for wire to be passed through where drilling a pole is unsuitable

## FEATURES—POLE PLATES

- Multiple attachment types ( bolt/band)
- Integrated drip hole
- Stainless hardware standard



**CONTACT US:**

**CANADA: (905) 670-3444**

**US/TOLL FREE: 1-844-668-6848**



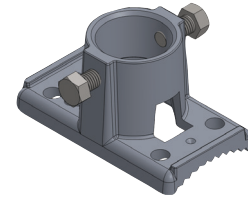
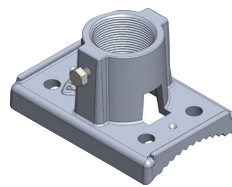
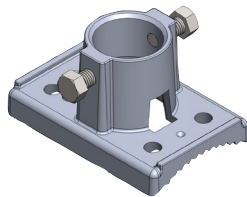
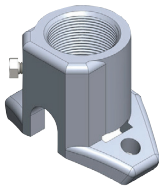
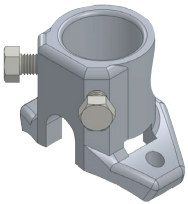
# SINGLE/DOUBLE/DOUBLE SLIM POLE PLATES

## ORDERING INFORMATION

SPP-H1	Single Band Pole Plate, NPS Threaded
SPP-H2	Single Band Pole Plate, Tapered Bore
SPP-H3	Single Band Pole Plate, NPT Threaded
SPP-H4	Single Band Pole Plate, Straight Bore
DPP-H1	Double Band Pole Plate, NPS Thread
DPP-H2	Double Band Pole Plate, Tapered Bore
DPP-H3	Double Band Pole Plate, NPT Threaded
DPP-H4	Double Band Pole Plate, Straight Bore
TPP-H1	SLIM (THIN) Classic Double Band Pole Plate, NPS Thread
TPP-H2	SLIM (THIN) Classic Double Band Pole Plate, Taper Bore
TPP-H3	SLIM (THIN) Classic Double Band Pole Plate, NPT Thread
TPP-H4	SLIM (THIN) Classic Double Band Pole Plate Straight Bore
Note: Additional options available-contact sales for details	

## SPECIFICATIONS

**Material:** Primary grade aluminum  
**Finish:** Cast aluminum can be painted as requested  
**Machine:** Computer numeric controlled machinin(CNC) to within 0.001" of Specification



Single Band Pole Plate

Double Band Pole Plate

Slim Classic

CANADIAN OFFICE/WAREHOUSE  
1641 Trinity Drive  
Mississauga, ON L5T 1K4  
[www.traffichardware.com](http://www.traffichardware.com)

CENTRAL OFFICE  
300 International Drive, Suite 100  
Buffalo, NY 14221  
[www.traffichardware.com](http://www.traffichardware.com)