



CAN-BRAC CLAMP SIGN ASSEMBLY

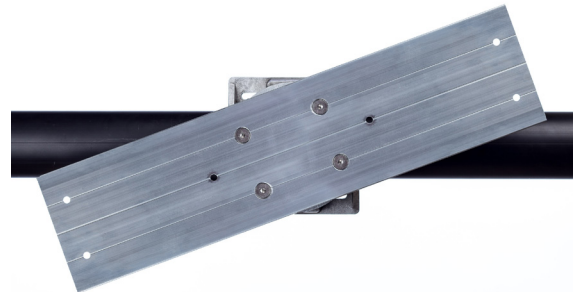
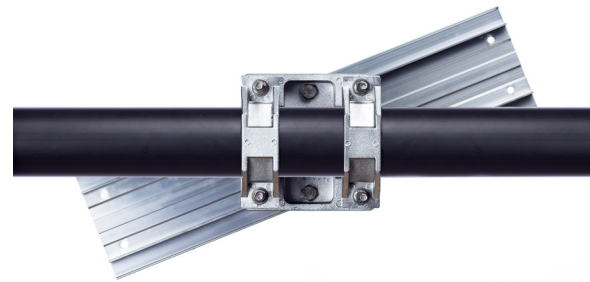
OVERVIEW

The Sign Bracket is a simple and efficient way to create a permanent fixture for road and traffic signs without requiring two bucket trucks. Simple, straightforward adjustability means displaying informative signs for road traffic is fast and easy.

The sign extrusion will provide reinforced backing for signs and increased support over a larger area.

FEATURES—CAN-BRAC TENON MOUNT- SIGN ASSEMBLY

- Easy installation
- 72 degrees of rotation adjustments
- Vertical or horizontal configurations
- Available in precut extrusion lengths from 12" to 96"
- Stainless steel hardware
- Mounts on tenons from 2-3/8" to 5" via clamps.



CONTACT US:

CANADA: (905) 670-3444

US/TOLL FREE: 1-844-668-6848



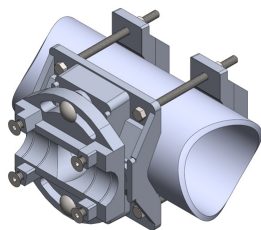
CAN-BRAC CLAMP SIGN ASSEMBLY

ORDERING INFORMATION

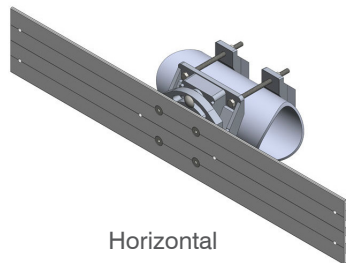
PART NUMBER	DESCRIPTION
CCS-E24	CAN-BRAC Clamp Sign 24" Extrusion
CCS-E36	CAN-BRAC Clamp Sign. 36" Extrusion
CCS-E48	CAN-BRAC Clamp Sign 48" Extrusion
CCS-E60	CAN-BRAC Clamp Sign 60" Extrusion
CCS-E72	CAN-BRAC Clamp Sign 72" Extrusion
CCS-E96	CAN-BRAC Clamp Sign 96" Extrusion
CCS-000V	Hub Only Vertical
CCS-000H	Hub Only Horizontal

SUPPORT & WARRANTY

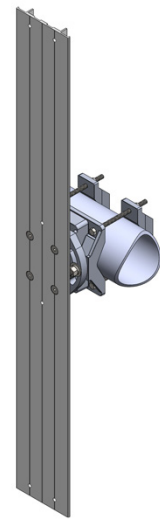
We believe so much in the quality of our products that we offer an industry leading support and warranty program, five years of warranty from date of initial purchase. If it breaks on installation we will replace it, no questions asked.



Clamp Sign Hub



Horizontal



Vertical

SPECIFICATIONS

Finish: Cast aluminum
Material: Primary grade aluminum
Machine: Computer numeric controlled machinin(CNC) to within 0.001" of Specification
Colors: Available as required. Please visit our paint page for colors.

CANADIAN OFFICE/WAREHOUSE
 1641 Trinity Drive
 Mississauga, ON L5T 1K4
www.traffichardware.com

CENTRAL OFFICE
 300 International Drive, Suite 100
 Buffalo, NY 14221
www.traffichardware.com