



# ADJUSTABLE OFFSET PLUMBIZER

## OVERVIEW

The Adjustable Offset Plumbizer mounts to a 2 3/8" diameter mast arm tenon. It is adjustable for precise orientation (2 piece assembly 22° of adjustment).

The Plumbizer has no loose parts, therefore requiring no assembly. The device is installed between signal heads to minimize stress.

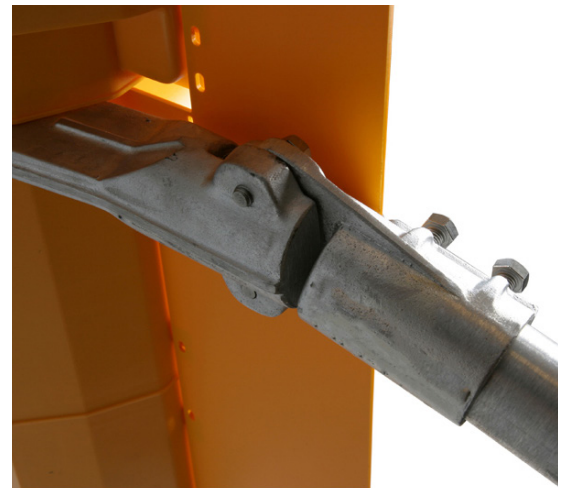
There is easy access to adjustment bolts, which ensures a secure installation. The octagonal universal nut (with set screw option for locking) reduces over torque of nut on the heads (T-Type).

The Plumbizer has radial serrations to ensure proper and secure locking between heads and plumbizer mounts.



## FEATURES—ADJUSTABLE OFFSET PLUMBIZER

- Adjustable for precise orientation
- Minimizes stress
- Simplified installation
- Stainless steel hardware
- Single point mount
- Added visibility



**CONTACT US:**

**CANADA: (905) 670-3444**

**US/TOLL FREE: 1-844-668-6848**

# ADJUSTABLE OFFSET PLUMBIZER

## ORDERING INFORMATION

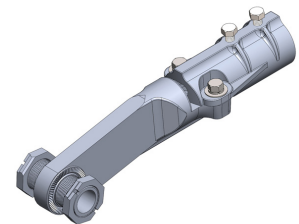
PART NUMBER	DESCRIPTION
PLU-001T	Adjustable Offset Plumbizer Tri-Bolt
PLU-001N	Adjustable Offset Plumbizer Nipple
PLU-TEE	Tee for Back to Back Plumbizer

## SUPPORT & WARRANTY

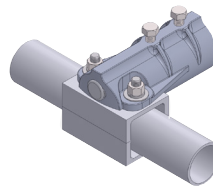
We believe so much in the quality of our products that we offer an industry leading support and warranty program, five years of warranty from date of initial purchase. If it breaks on installation we will replace it, no questions asked.

## SPECIFICATIONS

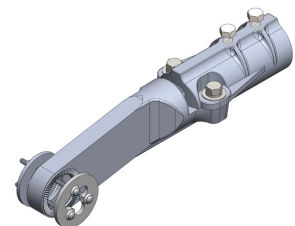
- Finish:** Cast aluminum  
**Material:** Primary grade aluminum alloy  
**Machine:** Computer numeric controlled machinin(CNC) to within 0.001" of Specification  
**Colors:** Available as required.



T-Type Nipple



Back to Back Plumbizer Tee



Tri-Bolt Joining Kit

CANADIAN OFFICE/WAREHOUSE  
1641 Trinity Drive  
Mississauga, ON L5T 1K4  
[www.traffichardware.com](http://www.traffichardware.com)

CENTRAL OFFICE  
300 International Drive, Suite 100  
Buffalo, NY 14221  
[www.traffichardware.com](http://www.traffichardware.com)