



SPAN WIRE HANGER

OVERVIEW

Our Span Wire Hanger is installation friendly and non-intrusive. The span wire hanger can be assembled to the signal head on the ground as the hanger slides over the span wire, making installation very easy.

Span wire hangers secure the top of the signal head and a lower attachment secures the bottom. A wire entrance head keeps water out of the cross arms. Also available in various configurations to secure the bottom of the signal head. Cast out of durable primary grade aluminum, span wire hangers are available in one, two, three, or four way mounting. The span wire hanger can have various parts suspended from it to hold different types of signal assemblies.

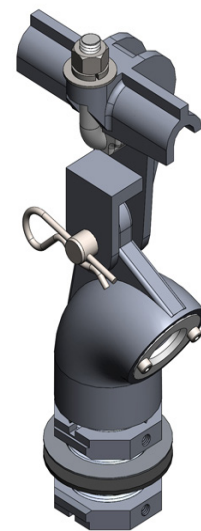
TH+D's span wire hanger fits span wires with a maximum 3/4" diameter.

For any multiple signal hanger a centre support with a removable bottom plate is included for easy wiring access.

FEATURES—SPAN WIRE HANGER

- Installation friendly
- Strong & durable
- Easy wiring access
- Permits free swinging movement

CONTACT US AT 1-844-668-6848



Top Assembly



SPAN WIRE HANGER

ORDERING INFORMATION

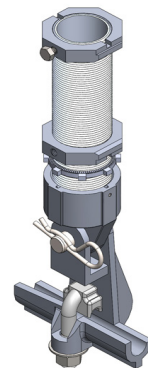
PART NUMBER	DESCRIPTION
SWH-01THU	Span Wire Hanger, Top Assembly, SS Bushing, Hitch Pin
SWH-01TCU	Span Wire Hanger, Top Assembly, SS Bushing, Cotter Pin
SWH-01BHU	Span Wire Hanger, Bottom Assembly, SS Bushing, Hitch Pin
SWH-01BHU	Span Wire Hanger, Bottom Assembly, SS Bushing, Cotter Pin
Nipple sizes 2", 3" & 6.5", Additional options available. Contact sales for details.	

SUPPORT & WARRANTY

We believe so much in the quality of our products that we offer an industry leading support and warranty program, five years of warranty from date of initial purchase. If it breaks on installation we will replace it, no questions asked.

SPECIFICATIONS

Finish: Cast aluminum
 Material: Primary grade aluminum alloy
 Colors: Available as required. Please visit our paint page for more details.



Bottom Stabilizer



Hanger