



POST TOP SLIPFITTER

OVERVIEW

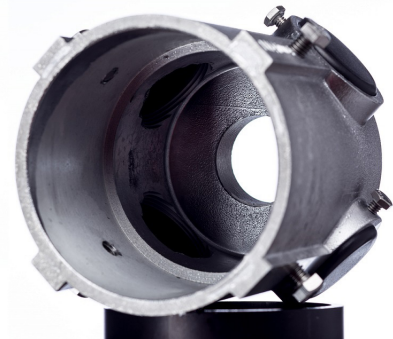
Traffic Hardware + Design offers their Post Top Bracket as an alternate method for mounting signal heads. Post tops are mainly used in temporary intersections, parking lots, check out booths, etc., and where access to conventional side-of-pole mounting is unavailable and/or prohibited.

Made out of durable primary grade cast aluminum, the post top fitting sits on a 4 1/2" diameter post. The fitting contains four stainless steel machined shoulders with set screws which are used to fasten the post top fitting on the post. With a combination of extruded aluminum arms and elbows, you can mount multiple signal heads.



FEATURES—POST TOP SLIPFITTER

- Ease of installation
- Strong & durable
- Mounting for multiple signals
- Interior rim to allow full contact with entire pole
- High shoulders with hex bolt set screws eliminates need for allen keys



CONTACT US AT 1-844-668-6848



POST TOP SLIPFITTER

ORDERING INFORMATION

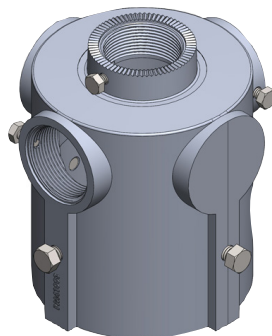
PART NUMBER	DESCRIPTION
PT3-452	Post Top Slipfitter, 1 Way w. 2 plastic caps
PT3-450	Post Top Slipfitter, 3 Way
PT5-450	Post Top Slipfitter, 5 Way
PT5-452	Post Top Slipfitter, 5 Way w. 2 plastic caps
PT5-454	Post Top Slipfitter, 5 Way w 4 plastic caps

SPECIFICATIONS

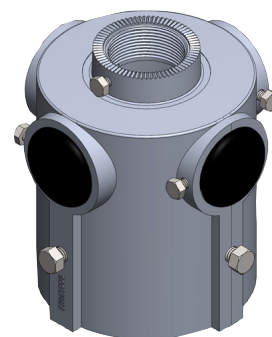
- Finish: Cast Aluminum
 Material: Primary grade cast aluminum alloy
 Colors: Available as required. Please visit our paint page for more details.

SUPPORT & WARRANTY

We believe so much in the quality of our products that we offer an industry leading support and warranty program, five years of warranty from date of initial purchase. If it breaks on installation we will replace it, no questions asked.



3-Way



5-Way with 2 Plastic Caps