



CAN-BRAC SIGNAL CLAMP ASSEMBLY

OVERVIEW

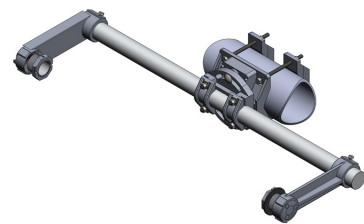
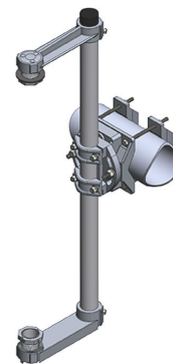
The CAN-BRAC is made of primary grade aluminum alloy designed for maximum strength, corrosion resistance and ductility. The cast ribs prevent rotation of the clamp on the master arm, while preventing over torque and clamp failure. Installs on 2-3/8" to 5" tenons using clamps.

The CAN-BRAC has rigid and captive mounting hardware (made of stainless steel). Available in horizontal and vertical options (72° rotation).

The CAN-BRAC pipe extrusion has a unique profile, which eliminates the need for filler extrusions and cross threading during assembly and installation. Flexible wire access extrusion cover ensures easy assembly and maintenance, especially during winter conditions.

FEATURES—CAN-BRAC SIGNAL CLAMP

- Quick and simple installation
- Full stainless steel hardware
- Heavy duty clamp design
- Fits multiple signal configurations
- Ships fully assembled and requires no special tools for installation
- Available with nipple/nut or tri-bolt



CONTACT US AT 1-844-668-6848



CAN-BRAC SIGNAL CLAMP ASSEMBLY

ORDERING INFORMATION

SECTIONS	PART NUMBER
3	CCL-300VN
4	CCL-400VN
5	CCL-500VN

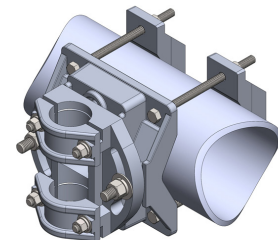
NOTE: For horizontal orientation add suffix "H" to part # in place of V and for TRI BOLT add suffix "T" in place of N, when ordering band sold separately. Additional options available. Contact sales for details.

SPECIFICATIONS

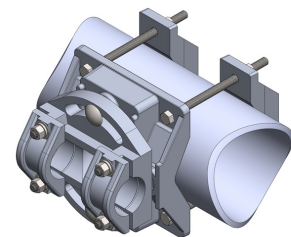
- Finish: Cast aluminum
- Material: Primary grade cast aluminum alloy
- Colors: Available as required. Please visit our paint page for more details.

SUPPORT & WARRANTY

We believe so much in the quality of our products that we offer an industry leading support and warranty program, five years of warranty from date of initial purchase. If it breaks on installation we will replace it, no questions asked.



Vertical



Horizontal