



DOUBLE/SINGLE ARM POLE PLATE ASSEMBLIES

OVERVIEW

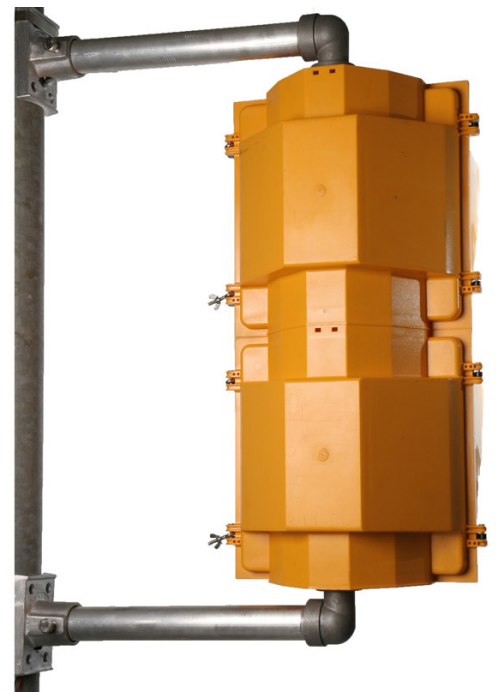
The Pole Plate and Elbow are cast from primary grade aluminum alloy for maximum strength, corrosion resistance and ductility.

The assemblies are available with single or double band pole plates, and are also available in standard or special pipe lengths.

The radial serrations on the elbow ensure locking between the elbow and the head assembly. The octagonal universal nut with set screw option reduces over torque of the nut on the signals.

FEATURES

- Available in single or double band pole plates
- Universal band or bolt option for mounting to poles
- Full stainless steel hardware



CONTACT US:

CANADA: (905) 670-3444

US/TOLL FREE: 1-844-668-6848

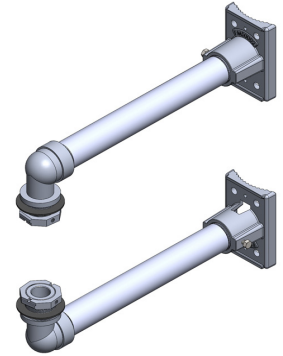
DOUBLE/SINGLE ARM POLE PLATE ASSEMBLIES

ORDERING INFORMATION

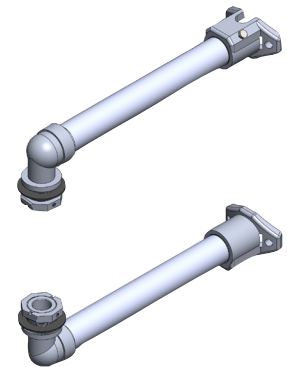
PART NUMBER	DESCRIPTION
DPA-XXX	Double Band Arm Assembly, Tapered Bore, 9.5", 12", 16", 18", 20", 24"
DPA-XXXT	Double Band Arm Assembly, Threaded Bore, 9.5", 12", 16", 18", 20", 24"
SDPA-XXX	Single Band Arm Assembly, Tapered Bore, 9.5", 12", 16", 18", 20", 24"
SDPA-XXXT	Single Band Arm Assembly, Threaded Bore, 9.5", 12", 16", 18", 20", 24"
Additional arm lengths available. Contact sales for assistance.	

SUPPORT & WARRANTY

We believe so much in the quality of our products that we offer an industry leading support and warranty program, five years of warranty from date of initial purchase. If it breaks on installation we will replace it, no questions asked.



Double Band Pole Plate Assembly



Single Band Pole Plate Assembly

SPECIFICATIONS

Finish:	Cast aluminum
Material:	Primary grade aluminum
Machine:	Computer numeric controlled machinin(CNC) to within 0.001" of Specification
Colors:	Available as required. Please visit our paint page for colors.

CANADIAN OFFICE/WAREHOUSE
1641 Trinity Drive
Mississauga, ON L5T 1K4
www.traffichardware.com

CENTRAL OFFICE
300 International Drive, Suite 100
Buffalo, NY 14221
www.traffichardware.com